

**Product:** ComBridge Web Communication Interface (WCI)  
**Product line:** KNXnet/IP Interface  
**Order number:** 3622-141-08  
**KNX-APD:** Appl-3622-WCI-08-0110-en  
**BMA:** BMA-3622-WCI-08-0110-en  
**ETS-PDB:** 3622-08-0110(WCI).VD2



## KNX ComBridge WCI Web Communication Interface

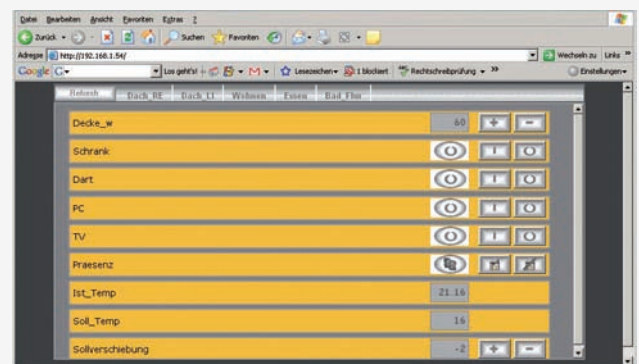
### Description

The ComBridge WCI is a hardware interface to connect a KNX installation with a TCP/IP-network. In addition the WCI is equipped with a web server. Via the TCP/IP network web pages can be loaded from the web server to display a KNX status or to control KNX events.

The device supports two connection types: The ETS3 uses the tunneling connection to program KNX devices via the TCP/IP network. By using the Scan function in the ETS, KNXnet/IP devices can be easily found and installed on the network.

Afterwards KNX devices can be programmed via the KNXnet/IP Protocol. With the correct network settings, the programming of KNX devices is also possible via the Internet.

The KNXnet/IP object server connection makes an active KNXnet/IP tunneling connection and the visualisation of a KNX installation possible at the same time. In connection with the visualisation software ComBridge Studio Suite, a range of tasks can be performed and a web-based status display is possible.



The web server is equipped with a configuration page and web pages which enable the control and display of up to 40 functions.

All 40 functions are parametered and programmed with the ETS.

### Related products:

ComBridge Studio Suite (CBSS)  
 ComBridge Multi Control Gateway (MCG)  
 ComBridge Net Communication Interface (NCI)  
 ComBridge Router (R)

Applications, manuals and descriptions are available in our Customer Center under [www.ipas-products.com](http://www.ipas-products.com).



## Application

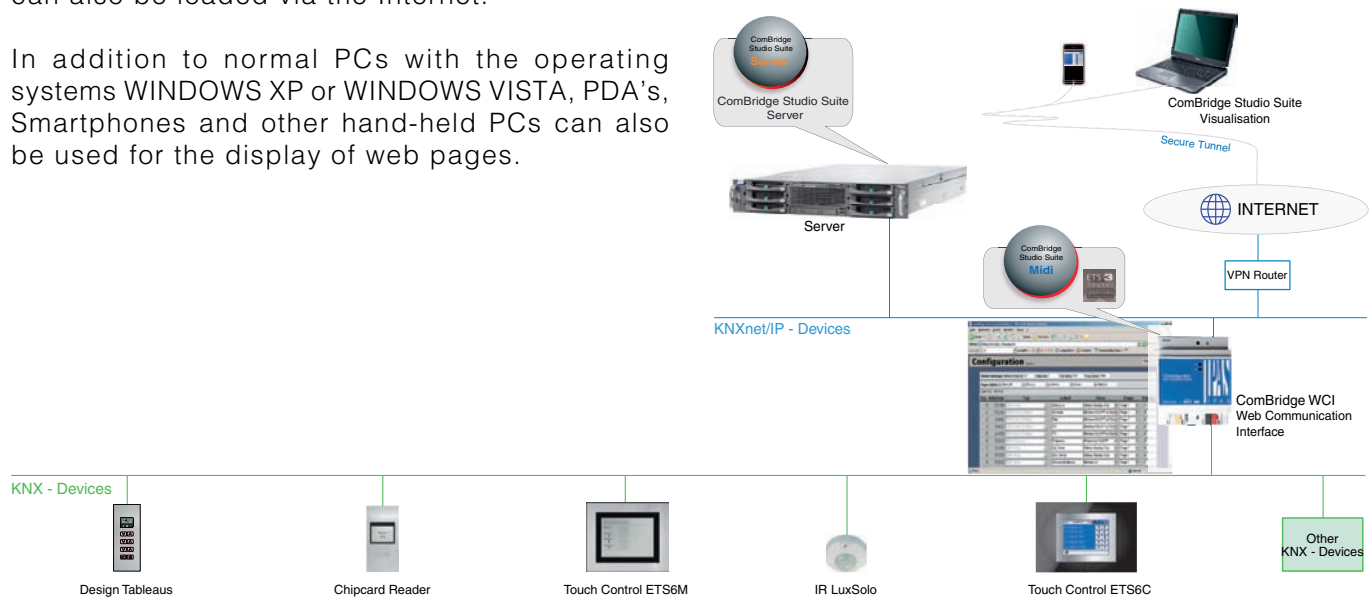
Typical applications for the WCI are the interface function (ETS tunneling connection) and visualisation tasks, such as web-based status display or control of KNX actions.

The WCI with its internal web server provides a cost-effective entry into the world of web visualisation. A PC is only required for an Web-Browser in order to display the WCI web pages.

With the right network settings, these web pages can also be loaded via the Internet.

In addition to normal PCs with the operating systems WINDOWS XP or WINDOWS VISTA, PDA's, Smartphones and other hand-held PCs can also be used for the display of web pages.

The WCI also enables the fully graphic visualisation with ComBridge Studio Suite via the object server connection. Both the graphic web pages and the web pages of the WCI can be used within a visualisation.



## Specifications: ComBridge WCI

<b>Connectors:</b>	Bus line: Bus coupler KNX, Voltage coupler: 12 to 30V AC/DC, RJ45 socket for Ethernet
<b>Dimensions:</b>	Wide: 70 mm, High: 55 mm, Installation depth: 86 mm
<b>Weight:</b>	150 g
<b>Casing:</b>	REG case 4TE for 35mm DIN rail mounting 35mm
<b>Power Supply:</b>	KNX plus external 12 to 30V AC/DC
<b>Protection type:</b>	IP20 according EN 60529, Din VDE 0470
<b>Class:</b>	I according IEC 1140

IPAS GmbH  
Grabenstrasse 149a  
D-47057 Duisburg  
Tel.: +49 203 37867-0  
Fax: +49 203 37867-10  
email: support@ipas-products.com  
web: www.ipas-products.com

